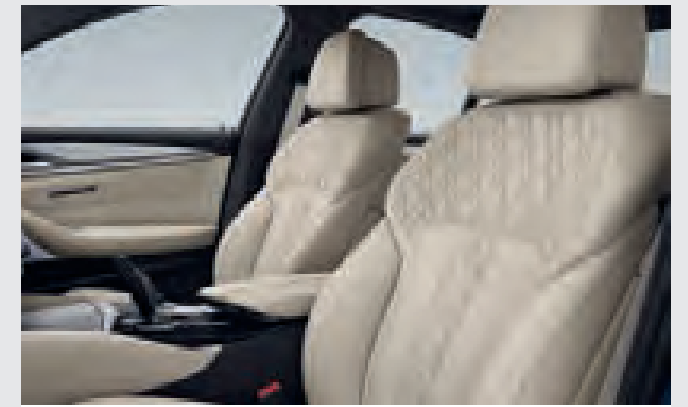


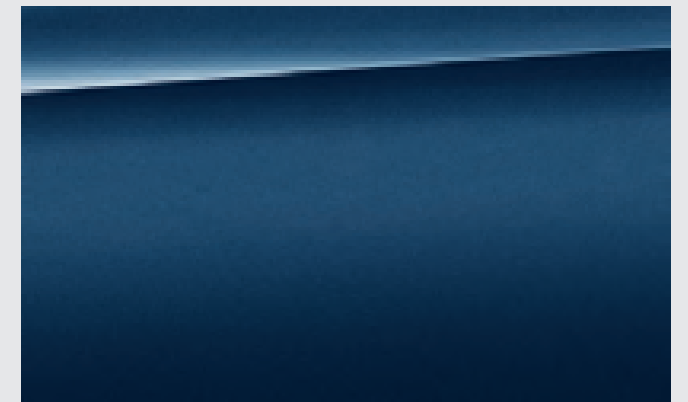


THE 5

THE BMW 5 SERIES.



18 Highlights

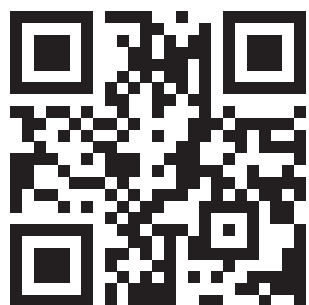


20 Worlds of colour

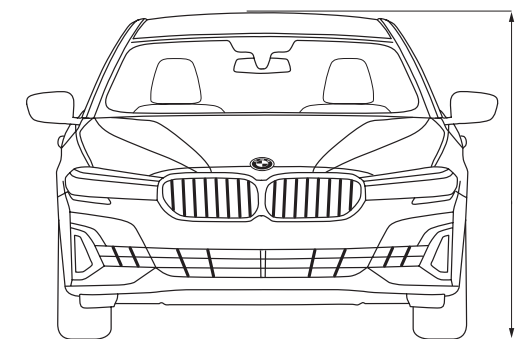


24 Original BMW Accessories.

DISCOVER MORE.



Scan the code to get more information and more driving pleasure on the all-new BMW 5 Series.



26 Technical data

WHAT IS POWER?
IS IT THE MIGHTY
ROAR OF THE
HEART?





IS IT BEING IN
THE FRONT
SEAT, TAKING
CONTROL...





SEEING
FARTHER THAN
EVERYBODY
ELSE?

OR IS IT THE
ABILITY
TO PLAY AT WILL...





WITH THE
TWISTS, THE
TURNS

AND THE ENDLESS
STRAIGHTS...
LEAVING EVERYONE BEHIND.





EVERY SINGLE DAY.
THE NEW 5
POWER. PLAY.



AROUND 20% LESS CO₂ EMISSIONS.

BMW EfficientDynamics is a technology package that goes beyond engines to encompass the entire vehicle concept and intelligent energy management. A whole range of innovative technologies come as standard in all BMW models, continuously increasing vehicle efficiency. By improving aerodynamics, engine efficiency and using lightweight construction design, the BMW 5 Series has succeeded in reducing CO₂ emissions by 15% for 520d and 21% for 530d.



UP TO 70 kg LIGHTER THANKS TO INTELLIGENT LIGHTWEIGHT CONSTRUCTION.

Precision-engineered to the smallest detail: intelligent lightweight construction means selecting and applying the best material for every part of the vehicle. The **BMW EfficientLightweight** concept seeks to reduce weight as much as possible by using exceptionally lightweight materials such as aluminium or carbon (carbon fibre reinforced plastic). This gives an added boost to dynamic driving characteristics and increases the vehicle's stability, safety and comfort.



AERODYNAMICS.

With targeted measures focusing on Aerodynamics, BMW has optimised drag coefficient and efficiency. Fuel consumption has also been considerably reduced by 18% for 520d and 27% for 530d. The Active air stream kidney grille and the Air curtain on the front wheels are all targeted and detailed measures to further reduce air resistance.



START-STOP FUNCTION.

The Start-Stop function enhances fuel efficiency by switching off the engine when the vehicle comes to a temporary standstill. Once the brake pedal is released, the engine starts up again almost instantly.



DIESEL

BMW 520d

- BMW TwinPower Turbo four-cylinder diesel engine with 190 hp (140 kW) and 400 Nm of torque
- Acceleration 0 – 100 km/h: 7.5 seconds
- Top speed: 235 km/h
- Fuel Economy: 20.37 km/l¹
- CO₂ emissions: 130 g/km¹

BMW 530d

- BMW TwinPower Turbo six-cylinder diesel engine with 265 hp (195 kW) and 620 Nm of torque
- Acceleration 0 – 100 km/h: 5.7 seconds
- Top speed: 250 km/h
- Fuel Economy: 17.42 km/l¹
- CO₂ emissions: 152 g/km¹

PETROL

BMW 530i

- BMW TwinPower Turbo four-cylinder petrol engine with 252 hp (185 kW) and 350 Nm of torque
- Acceleration 0 – 100 km/h: 6.1 seconds
- Top speed: 250 km/h
- Fuel Economy: 14.82 km/l¹
- CO₂ emissions: 160 g/km¹

¹ Performance data as measured in the emission test done under controlled conditions of environment, driving cycle, fuel, etc. as specified in Rule 115 of Central Motor Vehicle Rules, 1989.



With **BMW Gesture Control**, selected functions can be operated by means of defined hand movements. Simple gestures such as 'swiping' or 'pointing' are identified in the recognition area above the centre console and trigger functions such as accepting or rejecting an incoming telephone call, proceeding or cancelling navigation as well as starting and ending voice recordings.



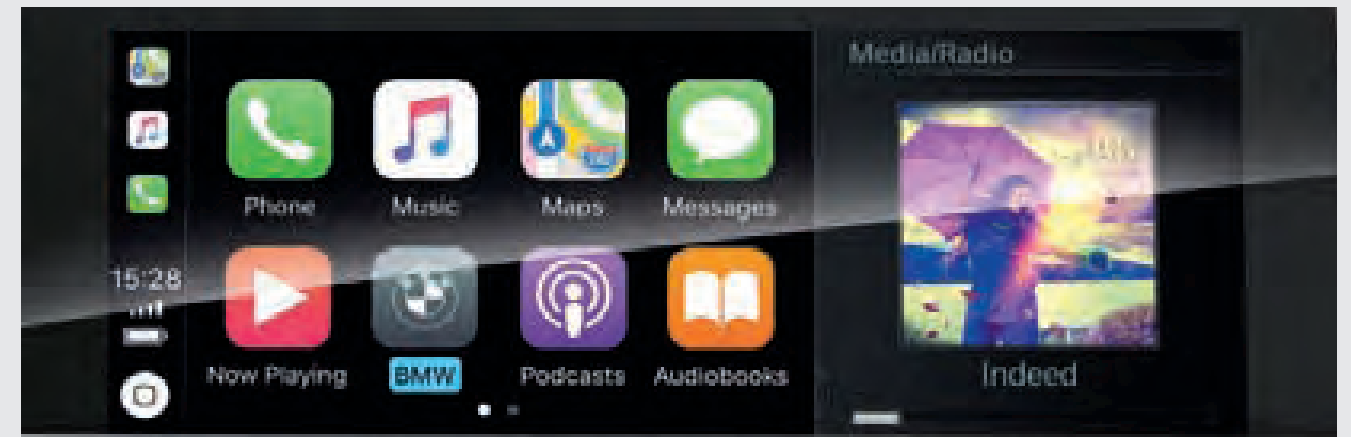
The newly developed interface design of **BMW Live Cockpit Professional with Navigation** makes using the infotainment system in the BMW 5 Series easier, more lucid and intuitive. The 31 cm (12.3") LCD display has Touch Functionality, configurable home screen, 3D Maps and can also be operated through iDrive Touch Controller, and Voice Control.



Parking Assistant with Surround View Camera makes parking and manoeuvring the vehicle easier. The Parking Assistant with linear guidance parks the vehicle automatically, parallel or perpendicular to the street. Surround View includes the camera-based functions like Rear View Camera, Panorama View, Top View and 3D View. The cameras in the exterior mirrors as well as at the front and rear of the vehicle allow for a 360° all-around view.



BMW Head-Up Display offers a full-colour projection of driving relevant and situational information onto the windscreen with improved resolution of 800 x 400 pixels.



Why go without the features of your smartphone in your BMW when you can continue operating it as usual? With smartphone integration,¹ your vehicle supports Apple CarPlay and Android Auto by means of a wireless connection between your smartphone and the vehicle. This allows you to conveniently use familiar functions and various apps in the vehicle.



"Hey BMW. Who are you?" Wouldn't it be incredible if your BMW was also your personal assistant? Communicate with your vehicle using the BMW Virtual Assistant*. It knows you, gets better every day and helps out whatever the situation. You also can assign your own personal activation word. It can explain everything about your vehicle and helps you to get to know your BMW even better.

¹ Apps available on Apple CarPlay® is dependent on country specific offer by Apple. ²The compatibility and range of functions from Apple CarPlay® depend on the model year and the software installed on the iPhone®. When the Apple CarPlay® preparation is used, selected vehicle data is transferred to the phone. The mobile phone manufacturer is responsible for further data processing.



The **8-speed Steptronic Sport Transmission** offers incredibly sporty gear changes. Whether automatic or manual using gearshift paddles or gear lever - for comfortable coasting or incredibly dynamic driving. In SPORT+ mode and with the gear lever in the left hand S/M position, the gear shifts are configured for maximum performance.

The **Dynamic Damper Control** makes it possible to adjust the damper characteristics to suit respective driving and road situation, increasing comfort and driving dynamics.

Additionally, **ADAPTIVE Mode** is an intelligent driving mode that automatically supports a more sporty or comfortable driving style in accordance with individual driving behaviour.



The extremely torsionally stiff but light **Body Construction** provides the basis for sporty driving dynamics, high precision steering and agility. Additionally, it offers the passengers the best possible all-round protection.



LED Headlights with Adaptive headlights, variable city and motorway light distribution and BMW Selective Beam provide optimum illumination of the road when driving in the dark. Even at a standstill, the integrated cornering lights are automatically activated by signalling or turning the steering wheel and are active at speeds of up to 35 km/h.



Dynamic Stability Control (DSC) permanently assesses the vehicle's movements and stabilises it using engine and braking regulation when unstable driving conditions are detected. Additional features of DSC are, for example, brake drying, braking readiness or the Hill-Start Assistant, which holds the vehicle briefly in place when starting on inclines to prevent it from rolling backwards.



PARKING
AS IF
BY MAGIC.

If you wish, the BMW 5 Series can do the parking for you courtesy of the Remote Control Parking function. Simply centre the vehicle ahead of a space, step out and use the standard BMW Display Key to manoeuvre your BMW, even if it's a tight spot.

Once parked, the engine can be switched off via the key. And when it's time to move on, the engine can also be restarted via the key. During remote-controlled pulling out of a parking space, the vehicle automatically reverses in a straight line.



□ In laser high-beam mode, BMW Laserlight* illuminates a range of up to 650 m, nearly twice as far as that of conventional headlights. Better visibility in the dark significantly increases safety. Blue accents and the lettering "BMW Laser" in the headlight also underline the technological standards and the sportiness of the vehicle.



The **Electric Glass Sunroof** with slide and lift function, including an electric sliding interior roof, anti-trap protection, as well as comfort opening and closing, allows the airflow to be individually regulated to create a pleasant interior climate.

The integrated wind deflector prevents draughts from developing in the interior and ensures a lower level of wind noise.



The **Comfort Access** with smart-opener makes it possible to open all four vehicle doors, including the luggage compartment, without using the key. This equipment includes contactless opening of the bootlid with a quick wave of the foot under the rear bumper.



The **Active Air Stream Kidney Grille** knows when the engine, brakes and other components need air and automatically opens the air vents. If no further air intake is required, it closes them again. This improves aerodynamics and fuel consumption falls.



The **Air Breather** channels air to the front wheels, reducing air resistance, fuel consumption and CO₂ emissions.



The **BMW Display Key** shows various information about the vehicle's status and allows selected functions to be controlled with an integrated touch display.



The **iDrive Touch Controller** with direct menu control buttons, eight functional bookmarks and voice control makes operation intuitive by allowing you to enter the address of your destination in handwriting on its touch-sensitive surface.



BMW Individual Exterior Line in satinised Aluminium creates luxurious highlights with window recess finishers and side frame trim strips in silky matt brushed Aluminium.

The exterior mirror frames and bases in Black High-Gloss create a stylish contrast to these elements.



With **BMW Gesture Control**, certain functions can be operated by means of defined hand movements. For certain operations the system will, for example, recognise gestures such as 'swiping' or 'pointing' for accepting or rejecting an incoming call, or circular motions of the index finger to adjust volume.



The **Automatic Air Conditioning with Four-Zone Control** comes with the equipment included in automatic air conditioning with two-zone control with extended features, along with two air vents in the B columns. Additionally, the rear passengers can individually adjust their own climate via a separate control element with display.



Comfort seats in exclusive leather 'Nappa' complemented with an **Instrument Panel in Sensatec Leather** and **Ambient Lighting** lend the interior a highly exclusive atmosphere.



The **Comfort Seats** for driver and front passenger can be electrically adjusted in a variety of ways and provide a perfect seating position for a relaxed arrival.

The **Lumbar Support** for the driver and front passenger seats can be adjusted both vertically and laterally, allowing for an orthopaedically optimised seating position.



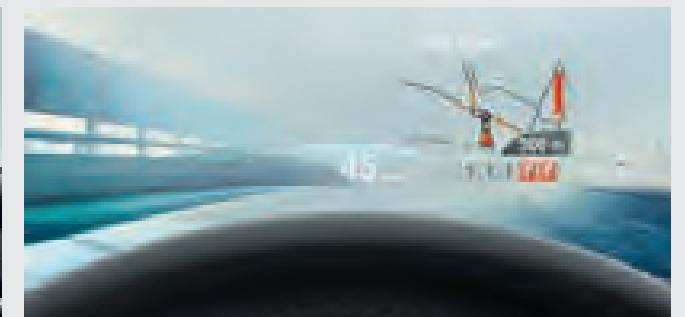
The high-performance **M Sport brake** is distinguished by exclusive blue high-gloss brake callipers with M designation and outstanding braking performance.



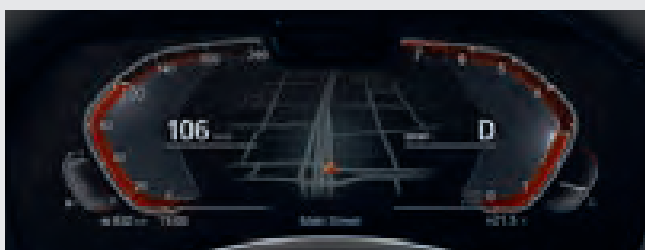
Enhanced Bluetooth with **Wireless Charging¹** offers a comprehensive telephony package with Bluetooth connectivity.



The **Harman Kardon Surround Sound System** with a powerful 464-Watt digital amplifier, vehicle specific equalising, 16 loudspeakers, including 2 with Chrome surround, a center speaker and surround mode create an aural experience of the highest intensity.



The **BMW Head-Up Display** offers a full-colour projection of driving relevant and situational information onto the windscreen with improved resolution of 800 x 400 pixels.

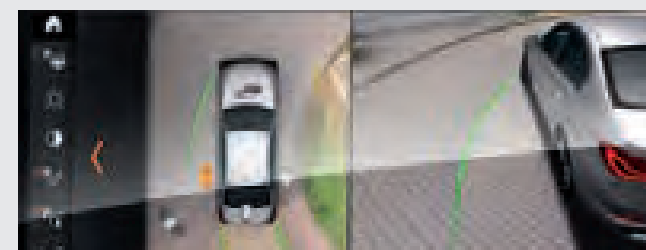


The newly designed **Instrument Display** with Black Panel technology and a screen diagonal of 31.2 cm (12.3") provides a highly impressive visualisation of the driving experience. The different modes and their specific displays – each of which has its own colour scheme and graphic style – can be displayed in the instrument cluster.

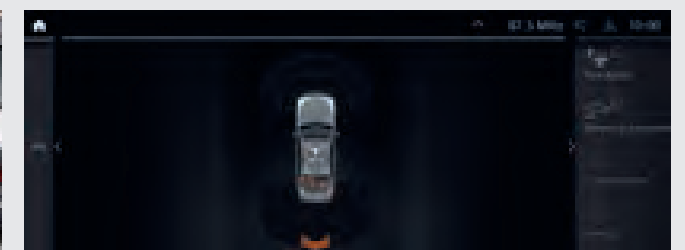


The **Driving Experience Control** offers the driver the choice between the standard COMFORT mode, ECO PRO mode, geared towards efficiency and SPORT+ mode, which enables an even more dynamic driving experience.

Additionally, **ADAPTIVE Mode** is an intelligent driving mode that automatically supports a more sporty or comfortable driving style in accordance with individual driving behaviour.



Parking Assistant with Surround View Camera makes parking and manoeuvring the vehicle easier. The Parking Assistant with linear guidance parks the vehicle automatically, parallel or perpendicular to the street. If the driver parks manually without the help of the Parking Assistant, Active Park Distance Control (PDC) offers additional protection against damage with the Lateral parking aid.



The **Reversing Assistant*** stores the last 50 m of the driven path in forward travel up to 35 km/h, so that it can be retracted if required. You are relieved of the steering work and can concentrate on monitoring the vehicle environment.

¹Inductive charging in accordance with Qi-standards for compatible mobile phones. Special charging cases available as BMW Original Accessories for select smartphones featuring Qi-standard inductive charging.



Standard Equipment

- BMW Laserlight
- Glass sunroof, electrical
- BMW Gesture Control
- BMW Display Key
- Fully Digital Instrument Display with 31.2cm (12.3") diagonal display
- Automatic air conditioning with dual zone control
- BMW Live Cockpit Professional with Navigation with 31 cm (12.3") Touch Display
- Harman Kardon Surround Sound system (464 W, 16 loudspeakers)
- Surround view cameras with 360°view
- Parking Assistant with Reversing Assistant
- Remote Control Parking
- Wireless Charging
- Apple CarPlay® and Android Auto

Exterior Design

- Air Breather in satinised aluminium
- BMW kidney grille with vertical slats in Black High-Gloss
- Front bumper with specific design elements in Black High-Gloss
- M designation on the front side panels
- Mirror base, B-pillar finisher and window guide rail in Black High-Gloss
- M Aerodynamics package with front apron, side skirts and rear apron with diffuser insert in dark shadow metallic
- Tailpipe finisher trapezoidal in Chrome High-Gloss
- Window recess cover and finisher for window frame in Black High Gloss
- M Sport brake with dark blue metallic painted brake calipers with M designation
- 18" M light alloy wheels Double-spoke style 662 M with mixed tyres

Interior Design

- M door sill finishers, illuminated
- Sport seats for driver and front passenger in Perforated Sensatec with contrast stitching
- Multi-function M leather steering wheel
- Car key with exclusive M designation
- Aluminium Rhombicle Smoke Grey M interior trim strips with Pearl Chrome accent trim
- Variable ambient light in six colours
- BMW Individual headliner Anthracite
- Lumbar Support for driver and front passenger



Standard Equipment

- BMW Laserlight
- Glass sunroof, electrical
- BMW Gesture Control
- BMW Display Key
- Fully Digital Instrument Display with 31.2cm (12.3") diagonal display
- Automatic air conditioning with 4-zone control, two extra vents in B-pillar
- BMW Live Cockpit Professional with Navigation with 31 cm (12.3") Touch Display
- Harman Kardon Surround Sound system (464 W, 16 loudspeakers)
- Surround view cameras with 360° view
- Parking Assistant with Reversing Assistant
- Remote Control Parking
- Wireless Charging
- Apple CarPlay® and Android Auto

Exterior Design

- Air Breather in Chrome High-Gloss
- BMW kidney grille with vertical slats in Chrome
- Front bumper with specific design elements in Chrome High-Gloss
- Mirror base, B-pillar finisher and window guide rail in Black High-Gloss
- Rear bumper with specific horizontal design elements on the rear diffuser in Chrome High-Gloss
- Tailpipe finisher in Chrome
- Window recess cover and finisher for window frame in Aluminium High-Gloss
- 18" light alloy wheels W-spoke style 632

Interior Design

- Door sill finishers in Aluminium, illuminated with 'Luxury Line' designation
- Electric Seats in leather 'Dakota' with line-specific stitching and leather piping
- Multi-function Sport leather steering wheel
- Car key with Chrome High-Gloss detailing
- Aluminium Rhombicle Smoke Grey M interior trim strips with Pearl Chrome accent trim
- Variable ambient light in six colours
- Instrument panel in Sensatec Black or Dark Coffee
- Lumbar Support for driver and front passenger



Standard Equipment

- BMW Laserlight
- Glass sunroof, electrical
- BMW Gesture Control
- BMW Display Key
- Fully Digital Instrument Display with 31.2cm (12.3") diagonal display
- Automatic air conditioning with 4-zone control, two extra vents in B-pillar
- BMW Live Cockpit Professional with Navigation with 31 cm (12.3") Touch Display
- Harman Kardon Surround Sound system (464 W, 16 loudspeakers)
- Surround view cameras with 360° view
- Parking Assistant with Reversing Assistant
- Remote Control Parking
- Wireless Charging
- BMW Head-Up display
- Apple CarPlay® and Android Auto

Exterior Design

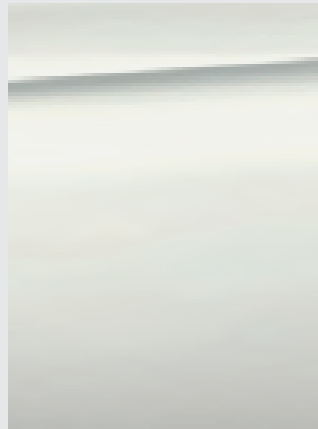
- Air Breather in Black High-Gloss
- BMW kidney grille with vertical slats in Black High-Gloss
- Front bumper with specific design elements in Black High-Gloss
- M designation on the front side panels
- Mirror base, B-pillar finisher and window guide rail in Black High-Gloss
- M Aerodynamics package with front apron, side skirts and rear apron with diffuser insert in dark shadow metallic
- Tailpipe finisher trapezoidal in Chrome High-Gloss
- Window recess cover and finisher for window frame in Black High-Gloss
- M Sport brake with dark blue metallic painted brake calipers with M designation
- 18" M light alloy wheels Double-spoke style 662 M with mixed tyres

Interior Design

- M door sill finishers, illuminated
- Comfort seats for driver and front passenger in Exclusive Leather 'Nappa'
- Multi-function M leather steering wheel
- Car key with exclusive M designation
- Aluminium Rhombic Smoke Grey M interior trim strips with Pearl Chrome accent trim
- Variable ambient light in six colours
- Instrument panel in Sensatec Black or Dark Coffee
- BMW Individual headliner Anthracite

EXTERIOR COLOURS.

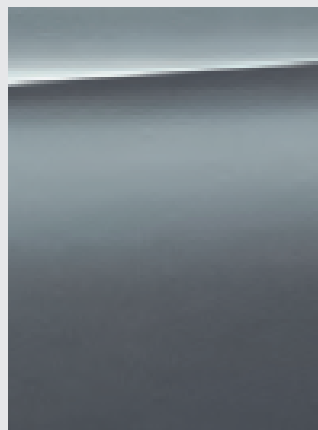
■ Standard equipment □ Optional equipment



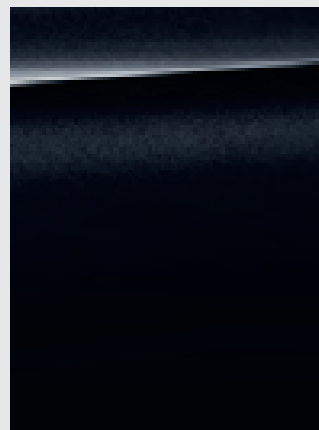
Non-metallic
300 Alpine White¹



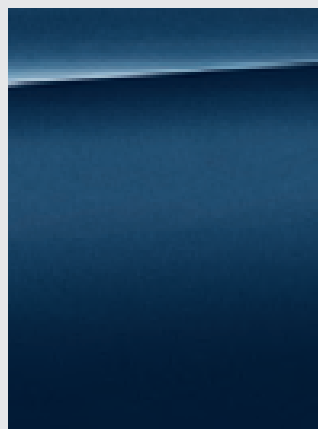
Non-metallic 668 Black



Metallic C2Y Bluestone²

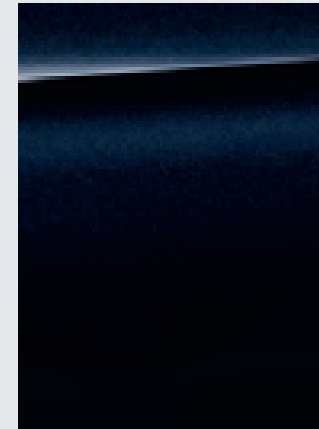


Metallic 475 Black Sapphire²



Metallic C1M Phytomic Blue²

M SPORT PACKAGE



Metallic 416 M Carbon Black³

[Colour samples] These colour samples are intended as an initial guide to the colours and materials available for your BMW. However, experience has shown that printed versions of paint, upholstery and interior trim colours cannot in all cases faithfully

reproduce the appearance of the original colour. Please discuss your preferred colour choices with your BMW partner or in your dealership. There you can also see original samples and be assisted with special requests.

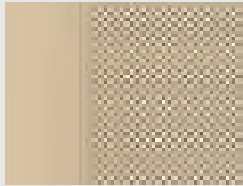
¹ Available as standard with the M Sport package and M550i xDrive.
² Optionally also available with the M Sport package and M550i xDrive.
³ Exclusively available with the M Sport package and M550i xDrive.

The availability of some equipment features and functions depends on engine variants or additional options. The market and production availability may vary. You can find detailed information about terms, standard and optional equipment at www.bmw.com or at your BMW Partner.

■ Standard equipment □ Optional equipment

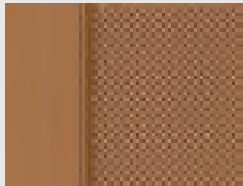
SENSATEC

Available with



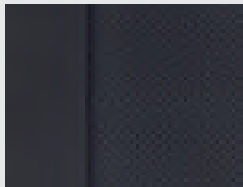
■ 530i M Sport

Sensatec KHFY perforated Canberra Beige*



■ 530i M Sport

Sensatec KHRI perforated Cognac



■ 530i M Sport

Sensatec KHSW perforated Black

LEATHER

Available with



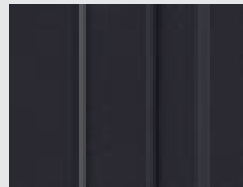
■ 520d Luxury Line

Leather 'Dakota' LCFI Ivory White exclusive stitching/leather piping in contrast



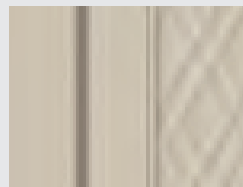
■ 520d Luxury Line

Leather 'Dakota' LCRO Cognac exclusive stitching/leather piping in contrast



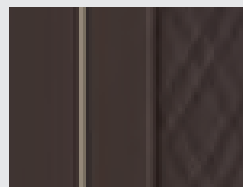
■ 520d Luxury Line

Leather 'Dakota' LCFK Black, exclusive stitching/leather piping in contrast Black



■ 530d M Sport

Exclusive leather 'Nappa' LZFI Ivory White with exclusive stitching/leather piping in contrast*

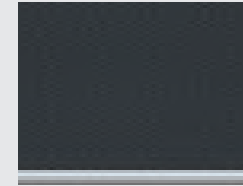


■ 530d M Sport

Exclusive leather 'Nappa' LZNI Mocha exclusive stitching/leather piping in contrast*

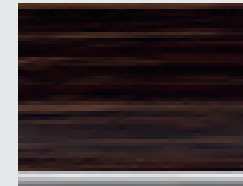
INTERIOR TRIM FINISHERS

Available with



■ M Sport package

Aluminium Rhombic Smoke Grey M interior trim strips with Pearl Chrome accent trim



■ Luxury Line

Fine-wood trim 'Fineline' Ridge with highlight trim finisher Pearl Chrome

Please note that even normal long- or short-term use can lead to unrecoverable upholstery damage. This can be caused in particular by non-colourfast clothing.

Please note that the interior colour depends on the selected upholstery colour.

* The availability of some equipment features and functions depends on engine variants or additional options. The market and production availability may vary.

You can find detailed information about terms, standard and optional equipment at www.bmw.com or at your BMW Partner.

ORIGINAL BMW ACCESSORIES.

AS A PROUD BMW OWNER, ACCESSORIES ARE CUSTOMISED TO YOUR OWN INDIVIDUAL TASTE. NOW YOU CAN FURTHER ENHANCE YOUR DRIVING PLEASURE WITH ORIGINAL BMW ACCESSORIES AND PERSONALISE YOUR 5 SERIES FOR A GREATER LEVEL OF LUXURY. CHOOSE FROM OUR WIDE RANGE OF ACCESSORIES SPECIALLY DESIGNED FOR THE INTERIOR, EXTERIOR, CONNECTIVITY, TRAVEL AND COMFORT TO SUIT YOUR INDIVIDUAL NEEDS.





BMW Kidney Grille in Carbon Fibre.

A visual highlight at the front of the vehicle for an especially elegant, sporty and individual look.



BMW Kidney Grille, High-Gloss Black.

The High-Gloss Black Kidney Grille gives the front of the car an even more dynamic and athletic look.



BMW Exterior Mirror Caps in Carbon Fibre.

The striking carbon fibre exterior mirror caps underscore the vehicle's high-tech pedigree, adding an individual athletic touch.



BMW Front Attachment in Carbon Fibre.

The carbon fibre front splitter provides optimum aerodynamics and emphasises the vehicle's masculine appearance.



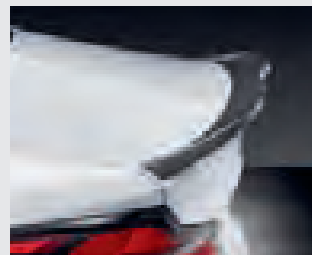
BMW Front Splitter in Carbon Fibre.

The carbon fibre front splitter provide optimum aerodynamics and highlight the vehicle's masculine appearance in a highly exclusive manner.



BMW Rear Diffuser in Carbon Fibre*.

Also, Available in Matt Black



BMW Rear Spoiler Pro in Carbon Fibre.

Also, Available in Matt Black



BMW Rear Spoiler in Carbon Fibre.

Also, Available in Matt Black

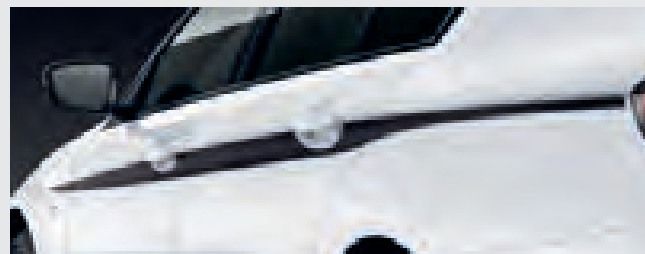


BMW Side Sill Attachment in Matt Black.



BMW Side Skirt Transfers.

The Side Skirt Transfers in Black perfectly complement the vehicle's design, underscoring its individual, athletic profile.



BMW Accent Stripes.

The Accent Stripes in black/silver matt give the car a highly individual and dynamic appearance.



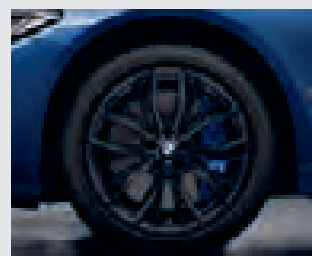
BMW Key Fob in Alcantara and Carbon Fibre.

The key case's material mix of carbon fibre and Alcantara is highly captivating. With accents in BMW M Blue.



BMW Retrofit Sports Brake.

The powerful M Performance brake system features ventilated lightweight sport brake discs.



19" M light alloy Double-spoke Style 786 M wheels, Black



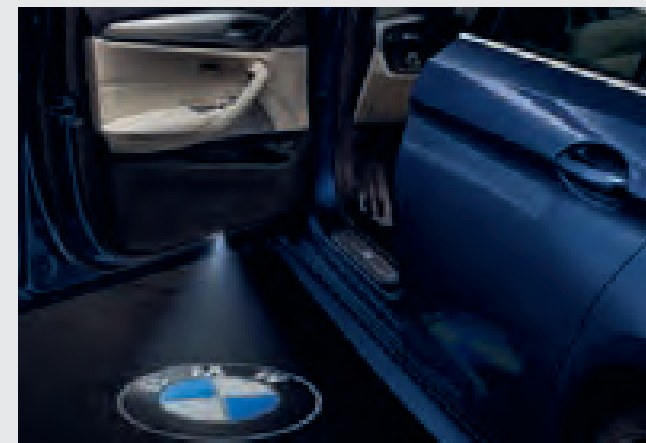
18" M light alloy Double-spoke Style 662 M wheels, Black



BMW Wireless charger. The BMW Wireless Charging Station Universal allows smartphones to be charged comfortably and efficiently without a cable, any time and anywhere.



BMW Floor Mat. The perfectly fitted, durable all-weather floor mats with a raised border and elegant design protect the front and rear footwell from moisture and dirt. They are Black and feature a Black inlay.



The Innovative BMW Door Projectors. The innovative door projectors are automatically activated when the doors are opened. They project an image onto the ground next to the car using an interchangeable slide.



BMW Advanced Car Eye 2.0. A highly sensitive full-HD camera that captures events in front and behind the car, even when it is parked. In the event of disturbances and extraordinary movement outside the vehicle, the camera automatically records the situation in order to document possible accidents or (attempted) break-ins.

WHEELS AND TYRES.



18" W-Spoke Light Alloy Wheel 632, Silver



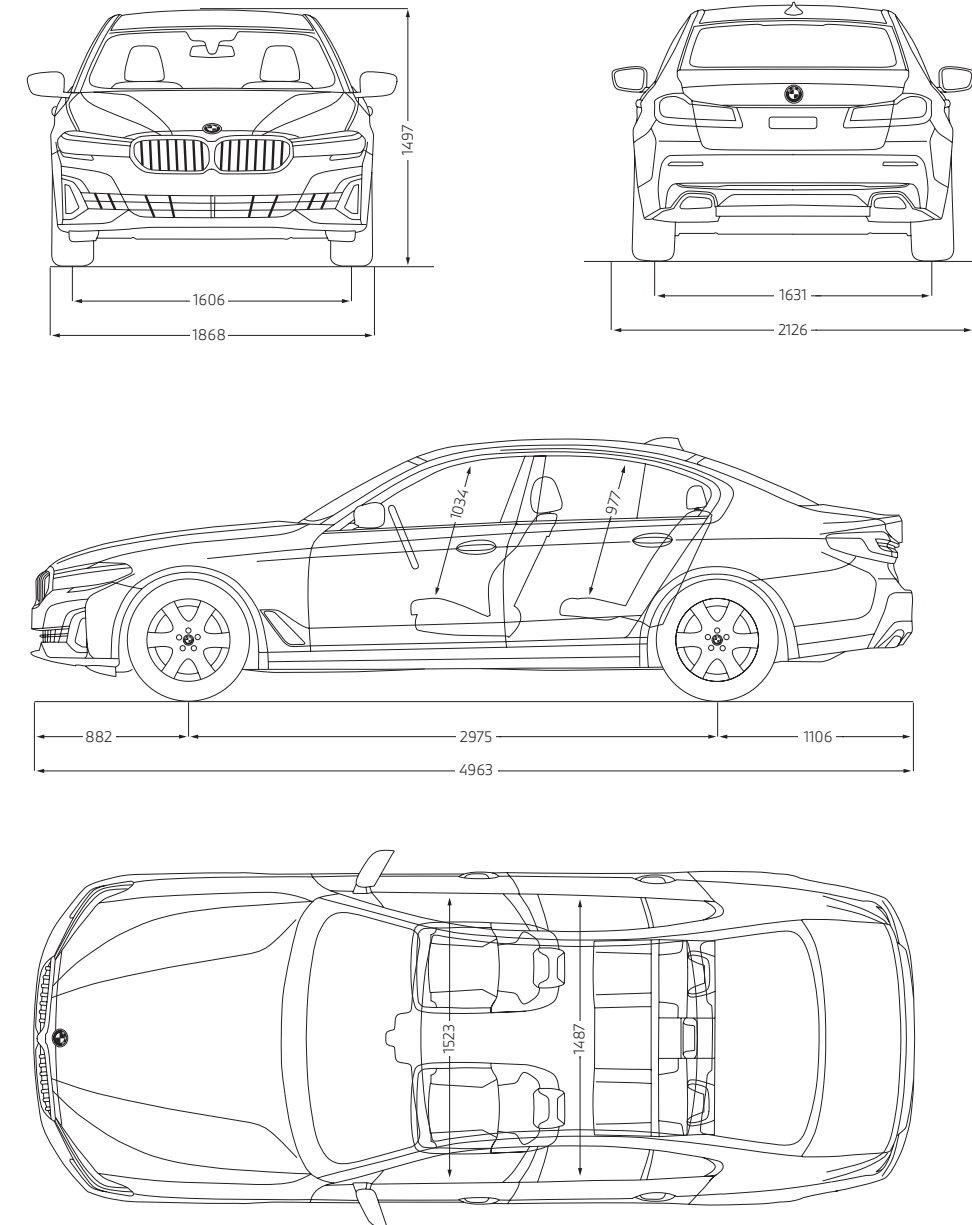
18" Double-Spoke Light Alloy Wheel 634, Orbit Grey

*Only In Conjunction with rear bumper trim.

Alloys shown in the brochure are subject to availability.

■ Standard equipment □ Optional equipment

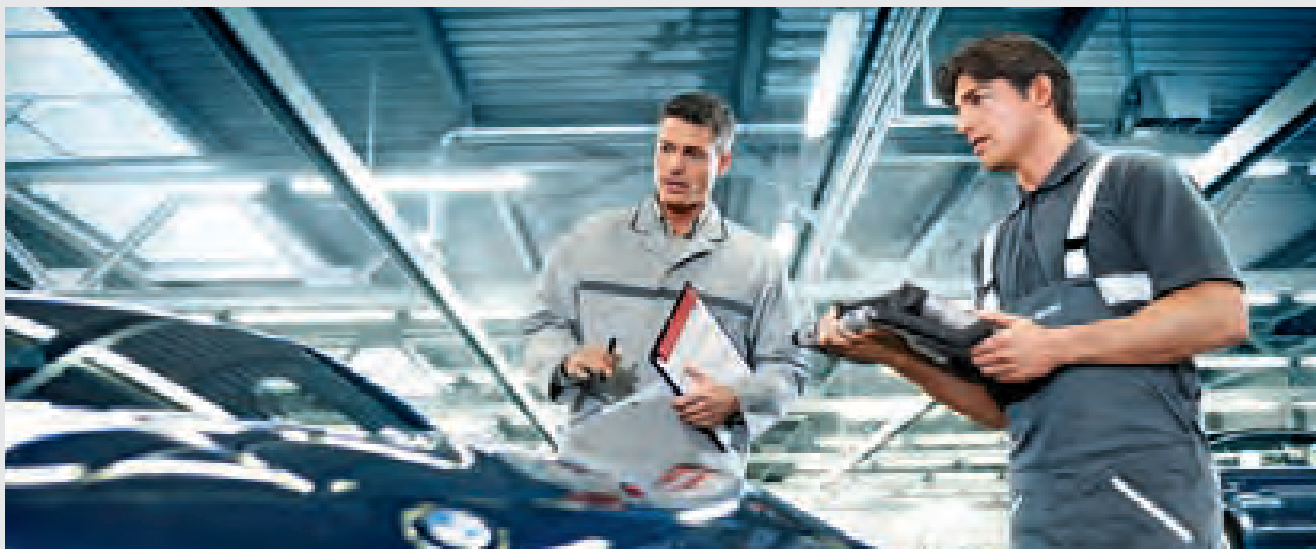
BMW 5 SERIES		530i	520d	530d
BMW TwinPower Turbo engine³				
Cylinders/valves	–	4/4	4/4	6/4
Capacity	cm ³	1998	1995	2993
Max. output/engine speed	kW (hp)/rpm	185 (252)/5200	140 (190)/4000	195 (265)/4000
Max. torque/engine speed	Nm/rpm	350/1450–4800	400/1750–2500	620/2000–2500
Power transmission				
Type of drive	–	Rear-wheel	Rear-wheel	Rear-wheel
Standard transmission	–	8-speed Steptronic	8-speed Steptronic	8-speed Steptronic
Performance				
Top speed	km/h	250	235	250
Acceleration 0–100 km/h	s	6.1	7.3	5.7



All dimensions in the technical drawing are given in millimetres.

¹ Electronically limited.

BMW EXTENDED WARRANTY AND SERVICE PACKAGES.



A BMW 5 Series will run well when it's kept well. And to make your journey one with complete peace of mind, we have packages under BMW Service and Repair Inclusive that take care of maintenance, inspection, wear and tear and warranty.

BMW Service Inclusive (BSI)

A single up-front payment covers an extensive range of work on your BMW 5 Series for a fixed period.

Complete Cost Control.¹

Integrate the cost of service work in your leasing and finance installments.

Fully Flexible.

You have a choice of various packages with different durations and mileage. You can choose from 3 years with 40,000 km to 10 years with 2,00,000 km.

Easily Transferable.

Consistent maintenance by trained BMW Certified Technicians and the use of Original BMW Parts secure the value of your car in the long term. In case you sell your car, BMW Service Inclusive is automatically transferred to the next owner – an additional selling point.

BMW Repair Inclusive (BRI)

BRI offers the ease of extending the warranty of your car with unlimited mileage up to 6 years. BRI too is automatically transferred to the next owner in the event of selling your car.

	Service Inclusive Packages	Service Inclusive Basic	Service Inclusive Plus	Repair Inclusive
Scope of Services		Maintenance All maintenance work, including any BMW Original Parts and oil required.	Wear and Tear Additional wear and tear repairs including any Original BMW Parts required.	Repair Extension of your statutory right to claim for vehicle defects (warranty).
Maintenance	Engine oil service	✓	✓	
	Engine oil top ups	✓	✓	
	Vehicle check and standard scopes	✓	✓	
	Service/replace air filter	✓	✓	
	Service/replace fuel filter	✓	✓	
	Service/replace micro filter	✓	✓	
	Service/replace spark plugs	✓	✓	
Service/replace brake fluid	✓	✓		
Wear & Tear	Replacement of front/rear brake pads		✓	
	Replacement of front/rear brake discs		✓	
	Replacement of clutch (if necessary)		✓	
	Replacement of wiper blades (once in a year)		✓	
	Extension of your statutory right to claim for vehicle defects (warranty)			✓

BMW FINANCIAL SERVICES.

BMW Financial Services
Realize the dream.



In the world of BMW, world-class isn't limited to the vehicles we engineer. It also finds its way into the services we offer. BMW Financial Services is the most flexible and efficient way to realise your dream of owning a BMW. Our goal is to make your financing experience seamless at every step of your purchase so that nothing comes between you and the joy of driving your BMW.

At BMW Financial Services, you are assured of:

- Tailor-made finance options, as per your specific needs
- Quick approvals with fast turnaround time
- Special loyalty benefits
- Part payment facility
- In-house call centre that provides the best-in-class customer interaction

The BMW 6 Series Gran Turismo comes with an exclusive BMW 360° Plan. It has benefits at every step of the way, all to ensure Sheer Driving Pleasure.

Easy to Buy.

The BMW 360° Plan allows you to pay low monthly installments as you only pay for what you use.

Easy to Own.

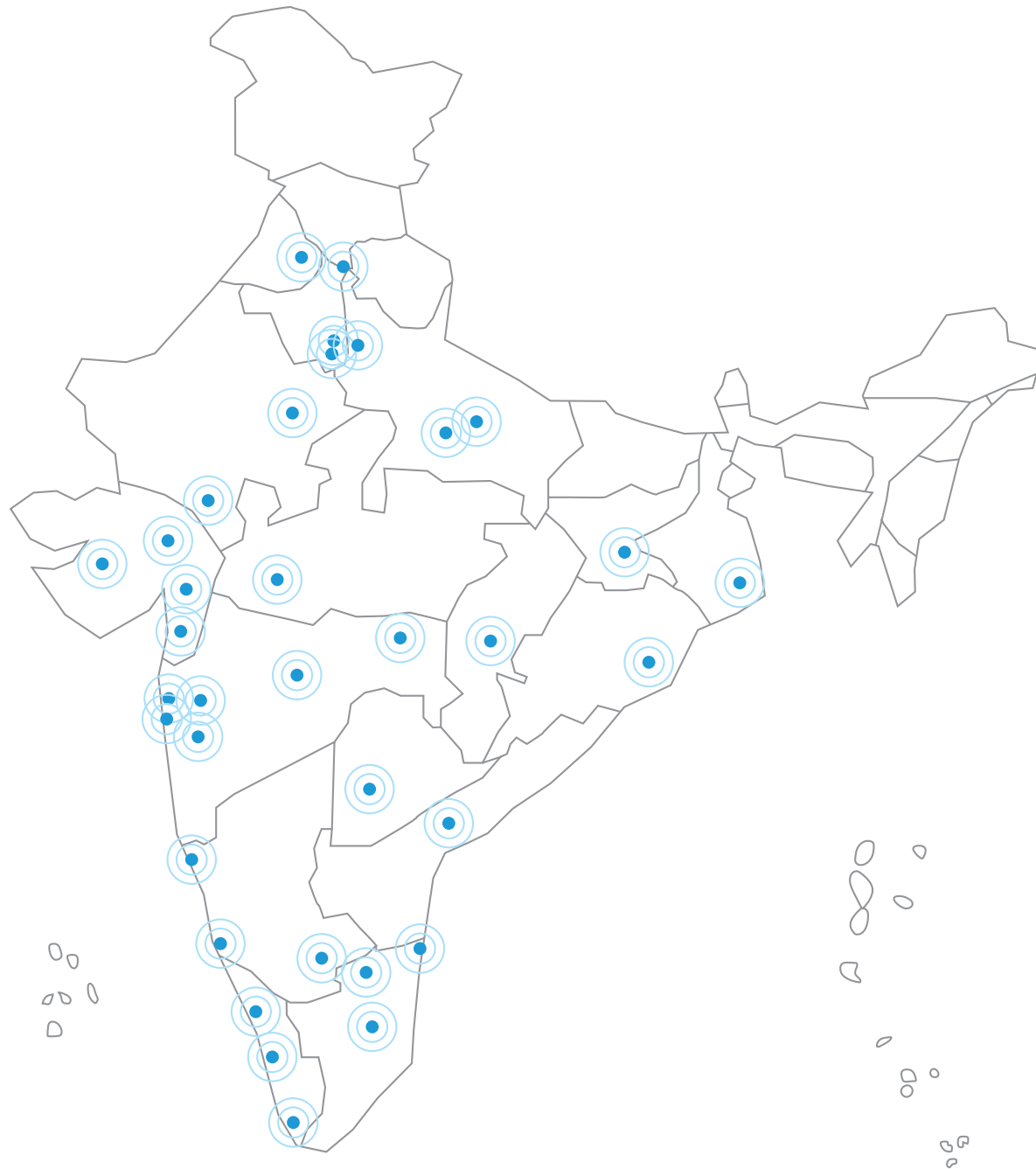
BMW offers various options under Service and Maintenance Packages which further reduce your cost of ownership.

Future Proof.

The BMW 360° Plan provides Assured Buyback value at the end of your finance contract.

For more information, contact the Finance and Insurance Manager at the nearest BMW Authorised Dealership.

¹ Applicable only with BMW India Financial Services Private Limited during the initial purchase of the vehicle (not on other finance or during upgrades).



The pictorial representation does not purport to be the political map of India.

NORTH

BMW Bird Automotive

- SW 4IDC, MG Road, Gurugram
- S Golf Course Road, Sector 56 Gurugram

BMW Deutsche Motoren

- S Mohan Cooperative, Mathura Road New Delhi
- W Shivaji Marg, Moti Nagar, New Delhi
- SW Sector 27B, Mathura Road, Faridabad
- SW Sector 63, Noida

BMW Infinity Cars

- S Rajouri Garden, New Delhi
- W Mayapuri, New Delhi

BMW Krishna Automobiles

- SW Industrial Phase 1, Chandigarh
- SW GT Road, Ludhiana

BMW Sanghi Classic

- SW Tonk Road, Jaipur
- S Madri Industrial Area, Udaipur

BMW Speed Motorwagen

- SW Chinhat, Lucknow
- SW Kalpi Road, Kanpur

EAST

BMW OSL Prestige

- S Silver Arcade, Kolkata
- W East Topsia Road, Kolkata
- SW Bhanpur, Cuttack

BMW Titanium Autos

- SW Ormanjhi, Ranchi

WEST

BMW Bavaria Motors

- S Wellesley Road, Pune
- W Hadapsar, Pune
- SW Verna, Goa
- SW Chikalthana, Aurangabad

BMW Eminent Cars

- SW Surat-Dumas Road, Piplod, Surat
- SW Sunpharma Road, Vadodara

BMW Gallops Autohaus

- SW S G Highway, Sarkhej, Ahmedabad
- SW Gondal Road, Rajkot

BMW Infinity Cars

- S Worli, Mumbai
- S Nariman Point, Mumbai
- S Vashi, Navi Mumbai
- W Lalbaug, Mumbai
- W Turbhe, Navi Mumbai
- SW Dewas Naka, Indore

BMW Munich Motors

- SW Sarona, Raipur
- SW Hingna MIDC, Nagpur

BMW Navnit Motors

- S Juhu, Mumbai
- S Malad, Mumbai
- W Andheri, Mumbai
- W Gokul Nagar, Thane

SOUTH

BMW Deutsche Motoren

- S Whitefield, Bengaluru
- W Whitefield, Bengaluru

BMW EVM Autokraft

- SW Kalamassery, Kochi
- S Kovalam Road, Trivandrum
- W Kochuveli, Trivandrum

BMW KUN Exclusive

- S Khairatabad, Hyderabad
- S Jubilee Hill, Hyderabad
- W RTC, Cross Road, Hyderabad
- SW Mangalagiri, Vijayawada

BMW KUN Exclusive

- SW Meenambakkam, Chennai
- S EA Mall, Chennai
- S Ambattur, Chennai
- S OMR, Chennai
- W Ambattur, Chennai
- SW Avinashi Road, Coimbatore
- SW Virudhunagar, Madurai

BMW Navnit Motors

- S Lavelle Road, Bengaluru
- W Bethahalasoor Post, Bengaluru
- SW Hosur Road, Bengaluru

SW Showroom and Workshop S Showroom W Workshop

SEARCH



Scan to visit the BMW Online Shop



For more information, call 1800 102 2269.

The models, equipment and possible vehicle configurations illustrated in this brochure may differ from vehicles supplied in the Indian market. For precise information, please contact your local Authorised BMW Dealer. Subject to change in design and equipment. © BMW India Pvt. Ltd., Gurgaon, India. Not to be reproduced wholly or in part without written permission of BMW India Pvt. Ltd., Gurgaon, India.